

# STARTUP VISA LITHUANIA GUIDE

All relevant information for  
program participants



# TABLE OF CONTENT:

## **1. Arrival**

- 1.1. Temporary residence permit (TRP)

## **2. Business set up**

- 2.1. Company establishment
  - 2.1.1. Suggested types of companies
  - 2.1.2. How to establish a company
- 2.2. Employees

## **3. Settling in Lithuania**

- 3.1. Finding an apartment
- 3.2. Family
- 3.2. Moving your belongings and/or pet
- 3.3. Education and children integration
- 3.4. Health care
- 3.5. Transport
- 3.6. Shopping
- 3.7. Lithuanian language courses

## **4. Other support providers besides Startup Lithuania**

## **5. Social groups**

- **Annex 1 – Startup Visa Lithuania process scheme**

# 1 Arrival

## 1.1. Temporary residence permit (TRP)

Each startup founder that has been approved by the Startup Visa Lithuania program is eligible to apply for a temporary residence permit in Lithuania.

### There are two ways to apply for a residence permit:

- if you already reside in Lithuania or have a valid visa, you can apply at a Migration office in Lithuania;
- if you're applying from abroad, you can apply for a temporary residence permit by submitting your documents and biometric data through designated <https://www.vfsglobal.com/en/individuals/index.html>

### In both cases the steps are similar:

1. Sign in to <https://www.migracija.lt/> using your email and follow this pathway:  
For foreigners: To get an electronic service, choose your citizenship -> I want to get a residence permit -> I want to receive a temporary residence permit -> Legal activity -> I am a start-up -> Apply for a permit.

2. Fill out the information in the application. Key points to be aware of:  
a. "Requested body": choose "Migration department" if you already reside in Lithuania; if you're applying in a VFS center abroad, choose "External service provider".  
b. Place of residence: at the time of filling the application you are not required to already have a place of residence in Lithuania. All foreigners can select an option to declare their place of residence in Lithua-

nia in one month after receiving their residence permits. In order to do this, select “No” for both questions: “Is Your place of residence currently declared in the Republic of Lithuania?” and “Indicate whether you wish to declare your place of residence through the Migration Department”. In the new window indicate where you intend to declare your place of residence (eg.: Vilnius City municipality (LT: Vilniaus miesto sav.) and “Vilnius” as a district). You don’t need to provide more details at this point and you’ll have to do it in the given time period. Later in the application, where you are asked to upload a “Document on Proper Accommodation in the Republic of Lithuania”, you can choose the option that you will declare your place of residence in an eldership or municipality within one month of collecting your residence permit. Remember, that this mandatory.

c. “Data on means of subsistence in Lithuania”: each applicant has to provide proof that they will be able to financially sustain themselves during their stay in Lithuania (or at least of one year). The minimal monthly amount required is 1038 EUR (in 2025) that means that a person has to be able to prove that he/she has or will be able to receive 12 456 EUR (1038 EUR x 12 months). You have to explain what are the sources of these funds and add docu-

ments proving that you have these funds later in the application (eg. official bank statement, employment contract etc.).

d. “Proof of health insurance”: each applicant has to obtain a health insurance document that meets these requirements: the sum of the insurance is not less than 30,000 EUR, valid for at least 12 months, valid in the EU, covers repatriation costs in case of illness or accident. No translation needed if original document is provided in English. You can obtain this by a provider of your choice (can be Lithuanian, can be foreign, just as long as it’s valid in Lithuania). Note: the option that you will “apply for health insurance when you arrive at the migration service” means that you will not upload the health insurance with the application, but will bring it when submitting your documents and biometric data at the Migration department / VFS office. IT DOES NOT mean that you can order health insurance at these locations (the translation is a bit off here).

3. Choose the institution where you intend to submit your application, documents and biometric data.

a. For those who are applying in Vilnius, Lithuania, our advice is to choose “Vilnius, Konstitucijos pr. 3 (International House Vilnius).

b. For those who are applying at their chosen VFS office, it’s important to remember that you will have to book your visit to the center separately, via their websites. You’ll find the list above or when filling the application in <https://www.migracija.lt/>.

**IMPORTANT:** Documents issued by government authorities (e.g. certificate of non-conviction) have to be either legalized or certified by an apostille (the action depends on whether your country has joined the ***Apostille convention***).

Other documents (issued by non-governmental institutions) (e.g. bank statement) have to be notarized.

All, documents that are not in Lithuanian or English have to be translated by a certified translator.

### **Price:**

General procedure: 160 EUR

Urgent procedure: 320 EUR

If you're applying through a VFS center, you will also need to pay a service fee, that can range from 30 to 120 EUR, depending on the country.

### **Processing period:**

General procedure – 1 month

Urgent – 15 days

Note: the timeframe mentioned above does not include the time it takes for the issued document to be sent to the country you applied at (if you're applying from abroad).

### **Documents required:**

***For receipt, for renewal.***



# 2 Business set up

You have 120 days to **establish a company and inform** the Startup Visa Lithuania team about its registration via email **within 3 working days**. In your email you must attach copies of company's Registration Certificate and Incorporation agreement (or equivalent document where full list of shareholders can be seen).

## 2.1 Company establishment

### 2.1.1. Suggested types of companies

We always recommend establishing a private limited liability company (UAB), since it is officially the best company type for Startups. It requires 1000€ starting capital, a bank account and ownership of the company is defined by shares.

Meanwhile, Small Partnership (MB) is better for early stage Startups, who are trying to bootstrap. There are no shares in this type and the starting capital is not needed. Also, it is easier to establish, since a bank account is necessary only after the company is established. You may look into the broader descriptions [here](#).

## 2.1.2. How to establish a company

Both companies can be established either online, using an e-signature or with the help of a law firm.

To attain **e-signature**, first, you will need to get a TRP. The easiest way to obtain and use the e-signature is to visit **Bite**, **Telia** or **Tele2** telecommunications salon and purchase a SIM card with Lithuanian phone number and ask to install an e-signature function into the SIM card as well. This way you could use the e-signature simply with your phone. Another convenient option could be a Smart ID. You should visit the **Medicinos Bankas** bank office with your passport or ID-card in order to register for **Smart ID**.

**Tip1!** We always recommend establishing a UAB, since it is officially the best company type for Startups. Steps to start a private limited liability company you will find [here](#).

**Tip2!** Legal help is needed? Wondering what the founding and other startup documents should look like? Check our [Legal documents](#) section where high-quality model legal documents for startups can be found. Feel free to download and use them! You can also explore our partners' offers for startup discounts: <https://www.startuplithuania.com/partners-offers/>

**Tip3!** Unfortunately, for a non-EU citizen to open a bank account at a regular bank in Lithuania is still a challenge. Everyone manages to do it, but it takes a long time, therefore, at first we suggest opening an online bank account (e.g. **Paysera**, **ConnectPay**), which takes a couple days, and then register to open a regular bank account.

# 2.2 Employees

**Local employee.** If you want to hire a local for your company, you can just post a job ad in most popular Lithuanian job portals like: [www.cvonline.lt](http://www.cvonline.lt), [www.cv.lt](http://www.cv.lt), [www.cvmarket.lt](http://www.cvmarket.lt), [www.cvbankas.lt](http://www.cvbankas.lt), [www.startuplithuania.com](http://www.startuplithuania.com) and wait for the locals to apply. After selecting a right candidate for the position, you should conclude a job contract with the selected employee and inform SoDra (The State Social Insurance Fund Board under the Ministry of Social Security and Labour) about the employee's start date.

**Employee from another EU country.** If you want to hire an employee from another EU member state, the employment procedure is similar to the one mentioned above, just that such an employee should be issued a certificate confirming his/her right of temporary residence in the Republic of Lithuania. More about how to get a temporary residence certificate you can read [here](#).

**Employee from a non-EU country.** To hire a non-EU citizen for your startup is a bit more complicated than the ones specified previously, however, Startup Lithuania has established a special procedure called Startup Employee Visa, which facilitates employment procedure of highly skilled workers from third countries at Lithuanian companies that create high added value and have great technological potential. Find out more [here](#).



# 3 Settling in Lithuania

## 3.1. Finding an apartment

You can search for apartments yourself or hire a broker to do it for you. It's easier and faster to find a place to live with a help of a broker, but you would usually have to pay a 1-month rent fee for the help. Let us know if you need a list of brokers who could help you. If you decide to search for an apartment on your own, here's the best website to do so – [aruodas.lt](https://www.aruodas.lt). Moreover, you could take advantage of **social groups** (See 5 topic) to search for an accommodation.

Usually, you need to pay 2 months' rent deposit to the landlord (you will get it back once you finish renting). Rent is usually paid to the landlord at the beginning of every month (basically in advance). Also, most of the renting contracts in Lithuania are long-term (1 year).

Once you have signed the renting agreement you will have to declare your living address. For the instructions how to declare your place of residence in Lithuania, please visit [migracija.lt](https://migracija.lt) → I am a start-up – I intend to engage in legal activities related to the introduction of new technologies or innovations that are significant for the economic and social development of the Republic of Lithuania → How can I declare place of residence in the Republic of Lithuania?

**Tip!** Check out [Go Vilnius](https://www.govilnius.com) comprehensive step by step guide [how to find a place to live](#).

## 3.2. Family

If you are relocating with a family, you will need to bring **your marriage** or **domestic partnership certificate**.

Moreover, your spouse will need the following documents:

- **A valid passport** (and ID card if they have one);
- **Documents proving their professional qualifications and experience** (optional, but recommended);
  - A document confirming they are fully covered by health insurance;
  - A document proving their place of residence in the Republic of Lithuania (may be submitted later).
- **Academic transcripts** (optional);
- **Medical files** (optional);

If you are coming with children you will need to bring the following documents as well:

- A child's birth certificate;
- Medical files (if there are any).

For more information on documents a child may need, see **Education and children integration** (See 3.4. topic).

These documents should be translated into Lithuanian.

A temporary residence permit for your family members is usually issued for **2 years**, and later can be renewed for **3 years**. They may receive a **national visa** for the duration of consideration of your application for a temporary residence permit.

Your family members may be in Lithuania as long as you stay in Lithuania, unless they get a residence permit on other grounds.

The procedure for the spouse to get or renew TRP is described [here](#).

**Note:** in case your spouse wishes to work in Lithuania, he/she does **not** need to get a work permit.



## 3.3. Moving your belongings and/or pet

You are allowed to bring your personal belongings free of import duties and VAT. For more information, please check [here](#).

You can also refer to [Nortvus, Relokon, Relocation to LT](#) for all relocation services, from obtaining a visa to finding new home and shipping items.

If you are relocating with a pet, the animal must be marked (microchipped) and vaccinated against rabies, have a recent certificate of health from a vet, and a pet passport (if applicable). Find out more: [pettravel.com](#)

## 3.4. Education and children integration

Most kindergartens and schools in Lithuania are state-funded, however, there are private kindergartens and schools too. Typical languages of instruction are English, French, Polish and Russian.

To register your child at a kindergarten/school, you will need to bring the following documents:

### For kindergarten:

- A child's medical file with the list of vaccinations;
- Copies of the child's passport, birth certificate, and residence permit.

### For school:

- A document from their current school confirming that your child is studying there (electronic documents are acceptable) – it needs to state the form of study and marks for all subjects;
- Your child's medical file with a list of vaccinations;
- Copies of your child's passport, birth certificate, and residence permit.

For further assistance registering your children at educational institutions of Vilnius, please contact [relocation@vilnius.lt](mailto:relocation@vilnius.lt)

## 3.5. Health care

Lithuania has a compulsory health insurance system in place that requires residents of Lithuania to pay compulsory health insurance contributions. Once you are registered and have begun paying contributions, you are guaranteed compensated healthcare services from the Compulsory Health Insurance Fund (**SoDra**).

If you start studying or working with a salary you would be automatically included in the mandatory health insurance and either government or employer would pay for you. However, if you are a non-EU start-up founder with a Lithuanian temporary residence permit and you are not legally

employed (i.e. under an employment contract), you should purchase private health insurance (BTA, Gjensidige, Seesam, Ergo, Lietuvos draudimas, IF). Full list [here](#).

**More information:**

<https://www.govilnius.lt/relocate-and-live/healthcare>



## 3.6. Transport

### You can get to Lithuania in 4 ways:

1. You can choose to fly to one of our 3 international airports: **Vilnius**, **Kaunas**, **Palanga**.
2. By **train**.
3. By **bus**.
4. By car. If you are intending to bring your car with you to Lithuania, you will need to register it. Don't forget that your driver's licence, car insurance, personal ID and car ownership documents should be carried at all times. Read more about it [here](#).

### Public transport

The main types of public transport in Lithuanian cities are buses and trolleybuses. There are a few different ways to obtain travel passes – in the kiosks near the bus stops, in the bus/trolley itself, or in the mobile apps.

**Tip!** The single-use passes in the bus itself are a little more expensive. We suggest you either purchase a public transport card, which can be topped up in the kiosks, or to use a mobile app if you plan to use public transport a lot. The app **Trafi** makes the process of public transport a lot easier, since it has real-time timetables and the route planner, which show different ways to reach your destination. It also lets you buy and store digital tickets and is quite easy to use.

### Ridesharing or taxi services

The most popular and the cheapest taxi services in Lithuania are **Bolt** and **Forus**. You can download their apps, it works just like **Uber**.

Vilnius also offers some alternative options when it comes to getting around the city:

- **Cyclo City** – a bike-sharing system
- **Bolt** – e-scooter sharing
- **City Bee** – popular car sharing
- **Spark** – electric car sharing

### For car drivers TO REMEMBER:

- Lithuanians drive on the right;
- All passengers must fasten their seat belts while driving.
- Children up to 135 cm in height must use child seats;
- The speed limit for most roads in Lithuania is 90 km/h, while for motorways it is 130 during summer season and, 110 during winter season, in the city its 30-50 km/h.;
- Headlights must be always on while driving;
- Usually in city centers you need to pay for parking. Download **m.Parking** app for your convenience (it covers Vilnius, Kaunas, Klaipėda and Trakai municipalities).

## 3.7. Shopping

For food and primary household items, there are a few main shopping chains – Maxima, Iki, Rimi, Lidl and Norfa. You can find them all over the city. Maxima, Iki and Rimi offer delivery options to home, called [barbora.lt](#), [lastmile.lt](#) and [rimi.lt](#) respectively.

Restaurants delivery is available through delivery apps [Wolt](#) and [Bolt food](#).

For clothing and bigger shopping, there are 3 major shopping malls: Akropolis, PC Panorama and Ozas. You can also visit PC Europa, CUP and G9. You can try out our unicorn's [Vinted](#) app for purchasing the second-hand clothes as well.

For furniture, you can go to IKEA or try [Skelbiu.lt](#) for the second hand furniture.

## 3.8. Lithuanian language courses

For those, who are planning to stay in Lithuania for longer, we recommend learning Lithuanian. We know that this language is not from the easiest ones, but [here](#) you will find list of courses, which might be helpful to familiarize yourself with one of the oldest spoken languages in the whole world.

**Tip!** Try to let people around you know that you are interested in learning our local language and let's see, maybe someone will be happy to teach you :)



# 4 Other support providers besides SL

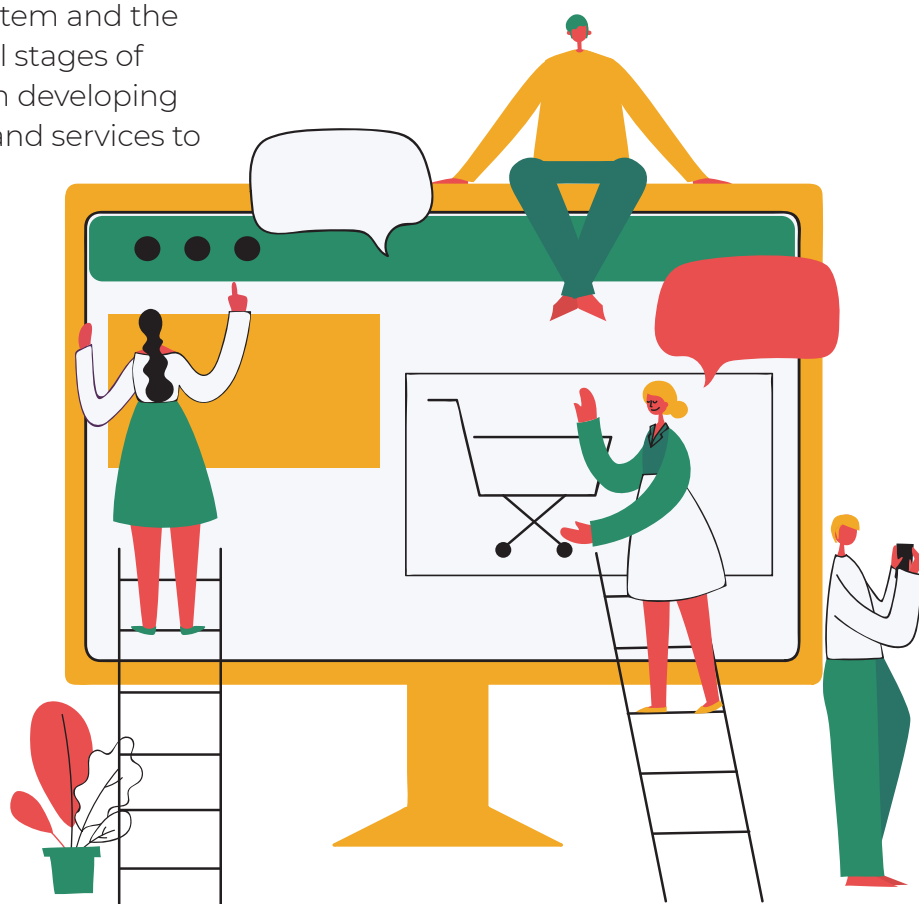
Family relocation and life in Vilnius – [govilnius.lt](https://govilnius.lt)

Support and information to people relocating to Lithuania's capital Vilnius - [ihvilnius.lt](https://ihvilnius.lt)

Information about immigration, the labor market, education, healthcare, and many other aspects related to living in Lithuania – [renkuosilietuva.lt](https://renkuosilietuva.lt)

For professionals from abroad to pursue their careers in Lithuania – [workinlithuania.lt](https://workinlithuania.lt)

**Innovation Agency Lithuania** – agency responsible for the development of Lithuanian innovation ecosystem and the promotion of innovation at all stages of business development – from developing ideas to delivering products and services to end-users.



# 5. Social groups

We encourage you to join the official Start-up Visa Lithuania 'Slack' group [here](#). You would be able to talk to your fellow program participants who have already went through all relocation and business establishment experiences. We also post there all the news that we get.

If you use Facebook, we suggest joining a private group '[Foreigners in Vilnius](#)' and '[Foreigners in Lithuania](#)', where you can exchange information regarding life in Lithuania with other members of the community.

## **Other social groups you might be interested:**

- [InterNations Community](#) for expats in Vilnius
- [International Women's Association Vilnius](#)
- [Meet Up](#) – brings people together to do more of what they want to do in life.



# STARTUP LITHUANIA – one stop shop for current and future startups in Lithuania.

For questions regarding the Startup Visa Lithuania application process or relocation and business setup, please contact  
**Julija Mikelskė:** [julija@startumlithuania.com](mailto:julija@startumlithuania.com)

[www.startumlithuania.com](http://www.startumlithuania.com)

[www.startupvisalithuania.com](http://www.startupvisalithuania.com)

 [Startup Lithuania](#)

 [Startup Lithuania](#)



# Startup Visa process scheme

## Annex 1

